

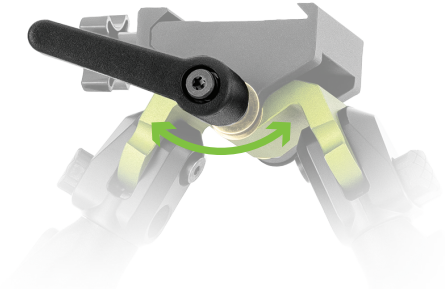


**HAVE QUESTIONS OR
NEED ADDITIONAL SUPPORT?**

support@mdttac.com
+1 (604) 393-0800

CANT ADJUSTMENTS

Rotate the lever to loosen the head and enable cant adjustment. Rotate the opposite way to retighten cant tension.



To reposition your lever, pull it forward, reposition and release the lever back into place.



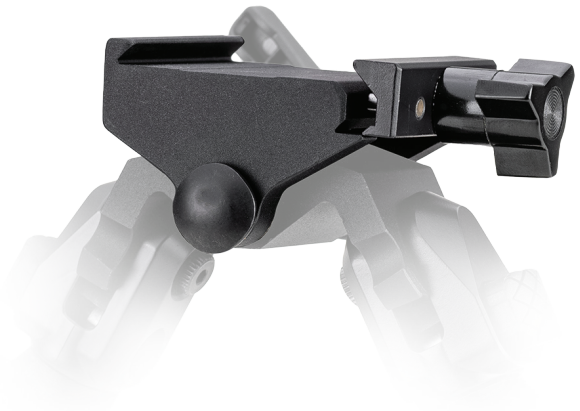
LEG ADJUSTMENTS

Push and hold the upper leg button to enable leg swing adjustment, locking into any of the 4 positions. Buttonless leg pull for length adjustment, then press and hold the lower leg button to bring the leg back up.



ARCA INSTALLATION

Turn the knob counter-clockwise to loosen the ARCA clamp. Position the clamp on an ARCA rail then turn the knob clockwise to tighten it.



M-LOK INSTALLATION

Align the pre-installed M-LOK screws with the M-LOK slots on your rifle. Slide the M-LOK nuts through the slots and using a **1/8" Hex Wrench**, tighten the screws so that the nuts are perpendicular to the slots.



PICATINNY INSTALLATION

Loosen the screws to open the picatinny clamp. Position the clamp on a picatinny rail so that the screws go between the rail grooves. Using a **9/64" Hex Wrench** tighten the clamp to the rail.



**HAVE QUESTIONS OR
NEED ADDITIONAL SUPPORT?**

support@mdttac.com
+1 (604) 393-0800

A.R.M.S. #17 INSTALLATION

Using a A.R.M.S. #17 mount, align the groove with the GRND-POD head. Use the 2 screws to fasten your A.R.M.S. #17 mount to the GRND-POD.



SLING STUD INSTALLATION

Loosen the large adjustment knob on the underside of the bipod to create enough clearance for the sling stud mount. Push the silver the pin and position the bipod onto the sling stud and ensure it is fully engaged.

Once attached, tighten the large adjustment knob on the underside of the bipod head until the desired clamping force is achieved. For easier access to the knob during tightening, deploy the bipod legs away from the adjustment knob.



WANT TO LEARN MORE?
CHECK OUT OUR OVERVIEW VIDEO

