

TIMBR FRONTIER RIFLE STOCK

V2.0 April 2022



TOOLS NEEDED

- Torque Wrench (in-lb)
- 5/32" Hex Drive Bit/Allen Wrench (SAE Threaded Actions) **OR** 4mm Hex Drive Bit/Allen Wrench (Metric Threaded Actions)

ADDITIONAL TOOLS REQUIRED FOR ADJUSTMENT AND FULL DISASSEMBLY

- 1/8" Allen Wrench (for grip changes)
- Phillips head screwdriver (for swapping toolless adjustment hardware to other side)

NOTE: SOME RIFLE MODELS REQUIRE SPECIAL INSTALLATION - PLEASE CHECK THE COMPATIBILITY LIST FOR ANY ADDITIONAL INSTRUCTIONS.

ITEM	DESCRIPTION
1	Barreled Action (not included)
2	Bolt (not included)
3	Magazine (not included)
4	TIMBR Frontier Chassis
5	Rear Action Screw - Long
6	Front Action Screw - Short
7	1/4" Mil. Spec. Washer (x2)
8	Nylon Hex Nut for action screws
9**	Oval Washer
10	Angled Grip Halves
11	Vertical Grip Halves
12	Thumb screw
13	Thumb wheel



Items may vary depending on model and style.

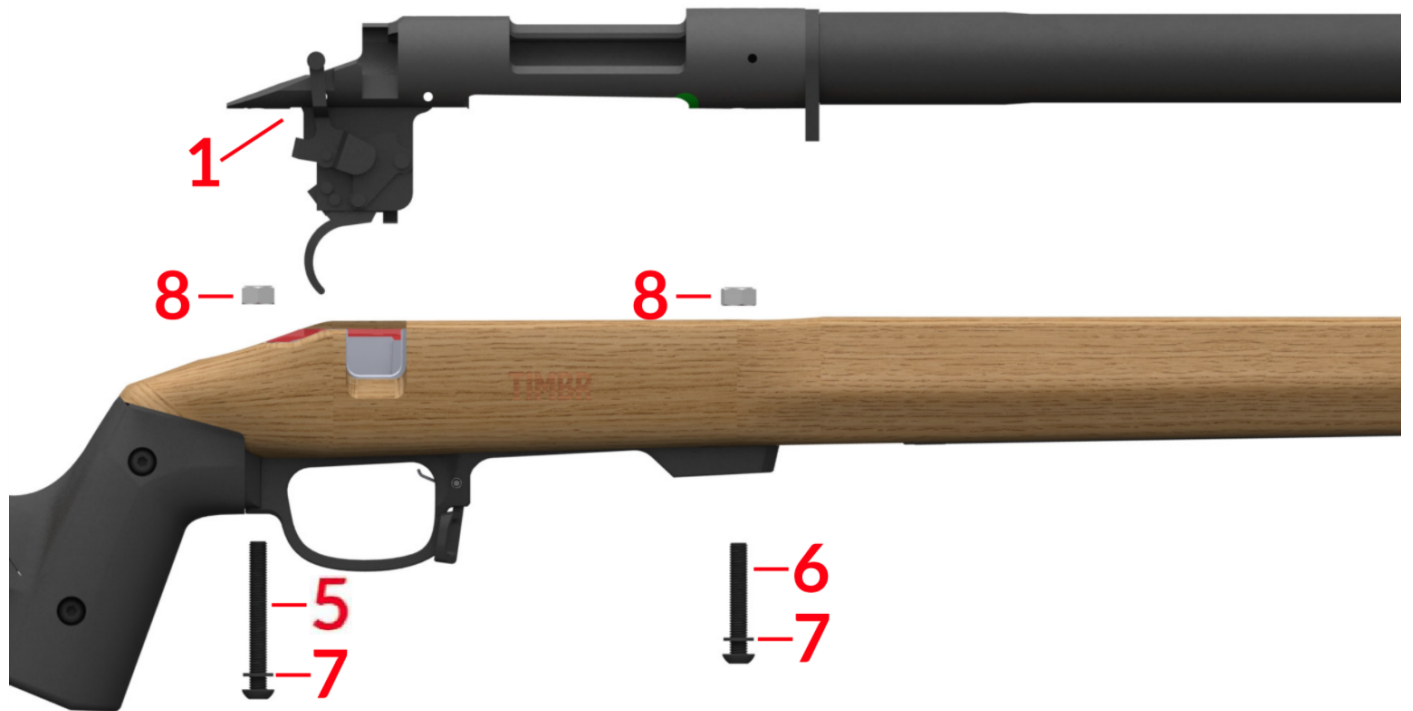
** Only applicable for Savage short action.

REMOVING THE ACTION

1. Ensure that the firearm is unloaded.
2. Remove the magazine (if inserted) and bolt.
3. Using the appropriate tool for your firearm, loosen and remove the two screws holding the stock to the action.
4. Set these screws aside as they are no longer needed.
5. Remove the barreled action from the stock.

CHASSIS / FOREND INSTALLATION

1. Remove the Nylon Hex Nuts (Item 8). Place the action into the Frontier chassis body (Item 4).
2. Using the included washers (Item 7), rear action screw (Item 5), shorter front action screw (Item 6) and, either, the 5/32" or 4mm Allen Wrench (depending on your action), loosely secure the Frontier chassis to the action. **Do not torque the screws tight.**



3. To ensure proper recoil lug contact, push the action rearward into the chassis.
4. While maintaining rearward pressure, Tighten the screws holding your barreled action to the Frontier Chassis. Next, torque the front action screw (Item 6) then the rear action screw (Item 5) to 60-65 in-lbs.
5. Install the bolt and an appropriate magazine.
6. Check the operation by cycling the rifle and ensuring safety is functional.

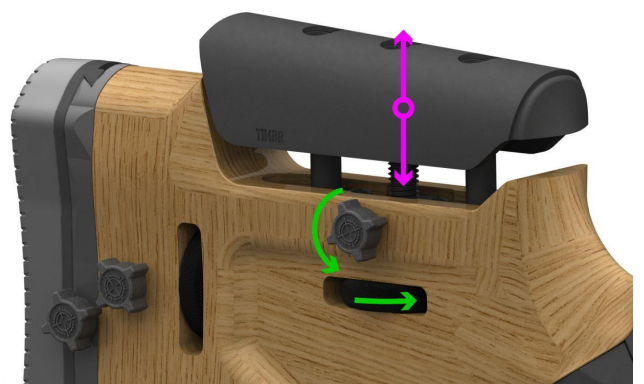


CAUTION: RE-TIGHTEN ALL SCREWS, AND FASTENERS AFTER INITIAL USE (APPROX. 100 ROUNDS)

CHEEK RISER ADJUSTMENT

1. Loosen the thumb screw (Item 12), DO NOT remove the thumb screw.
2. Now spin the thumb wheel (Item 13) to move the cheek riser to the desired height.

3. Re-tighten thumb screw to hand tight



BUTTSTOCK ADJUSTMENT

Length of Pull

1. Loosen the thumb screw (Item 12), DO NOT remove the thumb screw.
2. Spin the thumbwheel (Item 13) to move the buttstock to the desired position.



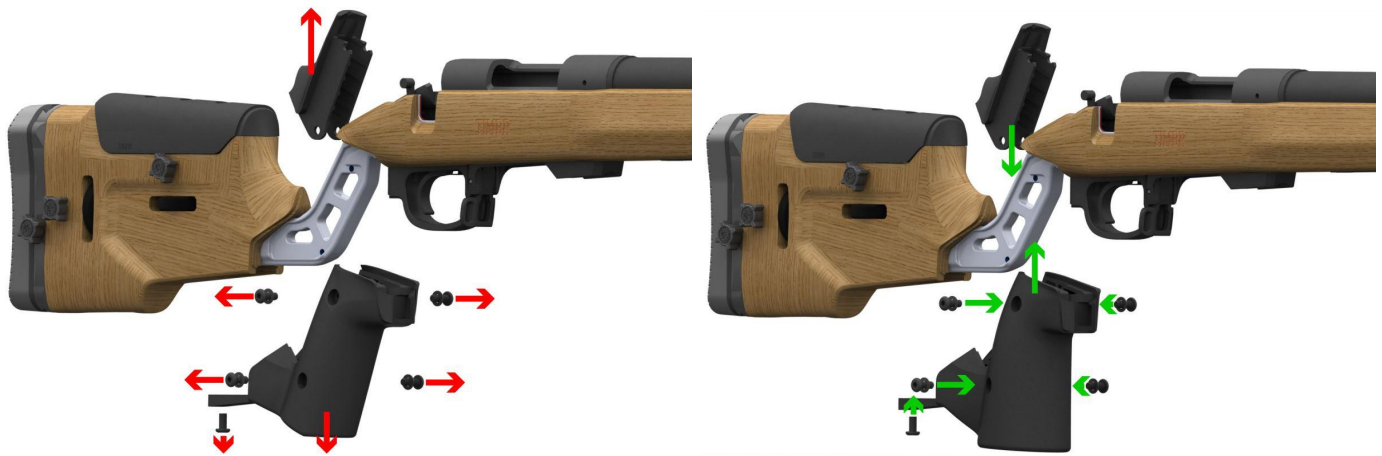
Buttpad Vertical Position

1. Loosen the thumb screw (Item 12), DO NOT remove the thumb screw.
2. Spin the thumbwheel (Item 13) to move the buttpad to the desired position.
3. Re-tighten thumb screw to hand tight.



GRIP SWAP PROCESS (VERTICAL OR ANGLED)

1. Begin by removing (5) 10-32 button head screws and washers using a 1/8" allen wrench. There are (2) screws on each side of the grip, and (1) through the tail.
2. Remove **both grip halves** and replace with the other set.
3. Replace the (5) screws and washers using the same tool.

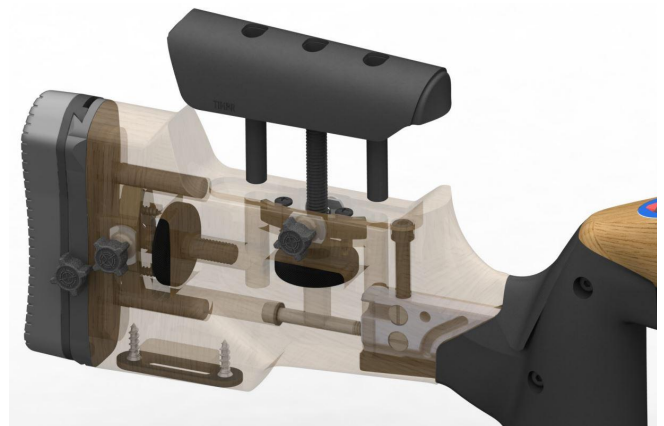


CHANGING LOP AND CREEK RISER CLAMP SYSTEM TO OPPOSITE SIDE

The LOP and cheek riser clamp systems can be swapped to either side of the stock for increased comfort and utility.

1. Remove the thumbscrew and set aside for later.
2. Remove the cheek riser assembly by rotating the thumbwheel until the threaded rod is released. **BE CAREFUL NOT TO LOSE THE THUMBWHEEL** as it is now free to drop out.
3. Remove (2) wood screws holding down the c-shaped Pin Clamp using a Philips head screwdriver, and save all parts for later.
4. Place the Pin-clamp on the opposite side of the clamp well, and secure it using the (2) wood screws. **DO NOT OVER-TIGHTEN.** Make finger-tight, then back off 1/4 turn.
5. Replace the thumbwheel. Line up the pins with the holes in the wood, and line up the threaded rod with the thumbwheel. Rotate the thumbwheel to drive the cheek riser assembly downwards.

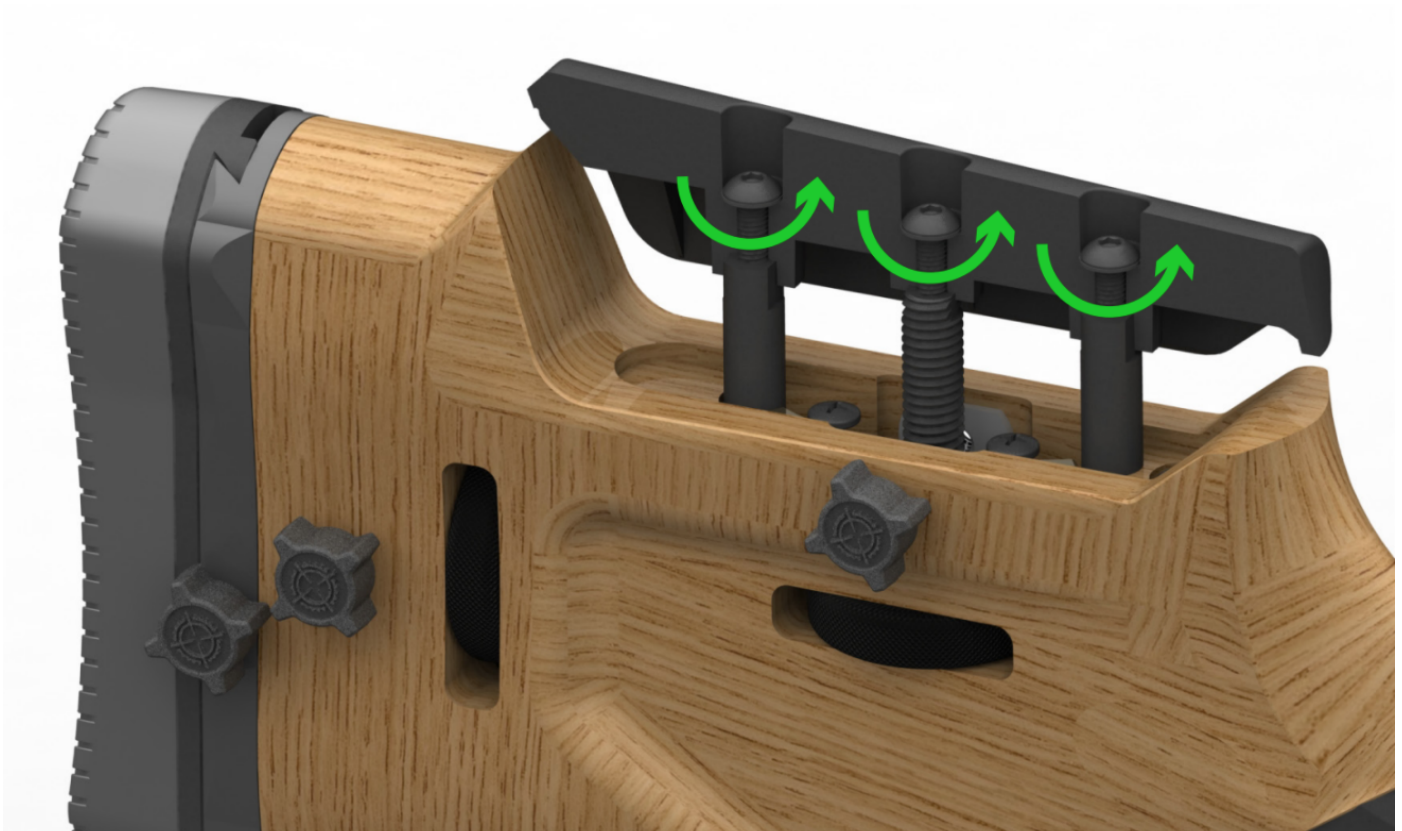
For LOP, follow the same process, but removing the butt pad instead of the cheek riser.



CHEEK RISER SIDE-TO-SIDE ADJUSTMENT

The cheek piece can be adjusted side-to-side and rotated for increased comfort and stability.

1. Slightly loosen the (3) screws that secure the cheek piece using a 1/8" allen wrench. **DO NOT LOOSEN** too far, or the pins and threaded rods will become unseated.
2. Manipulate the cheek piece into the desired position.
3. Retighten the screws.



MAINTENANCE INFORMATION

NOTICE: THIS MANUAL COMPLEMENTS YOUR RIFLE MANUFACTURER'S MANUAL. FOLLOW ITS LUBRICATION AND MAINTENANCE INSTRUCTIONS.

When should I clean and lubricate my new MDT chassis?

- Before and after long-term storage;
- Soon after being subject to adverse conditions such as rain, snow, mud, sleet, or saltwater;
- Soon after operating in rough conditions such as lying on the ground outdoors or dropped in mud.

How should I clean and lubricate my MDT chassis?

- Use a damp (not wet) clean cloth to remove dirt and other stains from the surfaces.
- Use a dry clean cloth to dry and finish the cleaning;
- Do not apply oil on the chassis surfaces;
- After cleaning, place a drop of gun oil on the following: sling swivel stud, magazine lock pin, action screws, pistol grip screw and forend screws

NOTE: AFTER USE UNDER EXTREME CONDITIONS, IT MAY BE NECESSARY TO DISASSEMBLE THE CHASSIS FOR PROPER CLEANING.

Is the MDT chassis corrosion-proof?

- Yes. the MDT chassis coating provides superior corrosion protection using Cerakote®.
- However, only proper care can keep your firearm and chassis system in good operating condition and maintain its appearance.
- If after extensive use the protective coating on plated parts shows signs of reduced corrosion protection, recoat, or replace the parts to ensure the integrity of the chassis.

WARRANTY

What warranty does MDT provide?

- MDT offers a 100% satisfaction guarantee on all products. If you receive any MDT product, but you are not completely satisfied, return it to MDT's central office within 30 days for a 100% refund.
- All our products come with lifetime support against defects.
- Performing modifications/alterations to the product voids all warranties, expressed or implied.

How do I claim warranty on a MDT product?

- If you experience a problem with your MDT Rifle Chassis system, call us or initiate a service ticket through the MDT website.
- Warranty claims must show the product model, a contact email, a phone number, and a description of the problem.

How does MDT process warranty claims?

- Upon receiving the item, MDT decides whether to accept the warranty claim, and whether to repair or replace the parts, at its discretion.
- MDT accepts no responsibility for loss or damage in transit.
- MDT pays for shipping and insurance charges for the return to the owner, ONLY after accepting the warranty claim.
- If non-warranty parts or services are required, MDT provides an estimate for approval prior to performing any service.

What are the warranty limitations?

- This warranty is exclusive and is in lieu of any and all other warranties, expressed or implied. No implied warranties of merchantability or fitness for a particular purpose are given and any and all liability for breach of any implied warranty or warranty created by law is disclaimed.
- Under no circumstances shall MDT be liable for incidental or consequential damages with respect to economic loss, injury, death or property damage, whether as a result of breach of this warranty, negligence or otherwise.

Jurisdictional Exceptions:

- Some jurisdictions do not allow limitations on how long an implied warranty lasts, so the above limitation may not apply to you.
- Some jurisdictions do not allow the exclusion or limitation of incidental or consequential damages, so the above limitation or exclusion may not apply to you completely or in part.

- This warranty gives you specific legal rights. You may also have other rights that vary from jurisdiction to jurisdiction.

SAFETY GUIDELINES

1. ALWAYS KEEP THE MUZZLE POINTED IN A SAFE DIRECTION.

Never allow your firearm to point at anything you do not intend to shoot. Always handle any firearm as if it were loaded and ready to shoot. UNLOAD ALL FIREARMS WHEN NOT IN USE. ALWAYS VERIFY. Load your firearm only when you are in the field or on the target range and ready to fire. Unload as soon as you finish shooting. Verify that the firearm is unloaded before storing and ALWAYS when you pick it up.

2. DO NOT RELY ON ANY MECHANICAL SAFETY.

Safety devices are not a substitute for safe handling procedures. Treat every firearm as if it can fire at any time, regardless of the safety position. Do not touch the trigger until you are ready to fire.

3. UNDERSTAND THE TARGET AND WHAT IS BEYOND THE TARGET.

Do not fire unless you know exactly where your shot is going, and what is beyond the expected point of impact. Never fire at a sound, a movement, or a patch of color. If you cannot see clearly what is beyond the target, DO NOT SHOOT.

4. NEVER SHOOT AT WATER OR AT A HARD SURFACE.

Shooting at water, rocks, or other hard surfaces may result in bullet fragmentation with unpredictable flight paths.

5. USE PROPER AMMUNITION.

The use of wrong ammunition, mixed ammunition, or improperly reloaded ammunition may result in serious injuries or death, and catastrophic damage to your firearm. Check each round before loading. If in doubt, DO NOT SHOOT.

6. IF THE FIREARM FAILS TO FIRE, DO NOT MOVE.

If the ammunition does not fire when you pull the trigger, stop and keep the muzzle pointed in a safe direction. Wait 15 seconds before opening the chamber. Look away from the chamber while opening it and removing the round. In semi-automatic firearms, remove the magazine before manually cycling the round. Properly discard the round immediately. DO NOT try to fire it again.

7. ALWAYS WEAR EYE AND EAR PROTECTION WHEN SHOOTING.

Wear protective shooting glasses to guard against any combustion discharges, cartridge ejection, or debris resulting from firing your firearm or firearms around you. Also, wear eye protection when you are disassembling or cleaning a firearm to guard against tensioned parts and cleaning solvents. Always use ear protection.

8. VERIFY THAT ACTION AND BARREL ARE CLEAR BEFORE SHOOTING.

Before loading your gun, inspect the action and barrel to ensure there are no obstructions such as snow, mud, excess lubricant, cleaning patches, or any other foreign material.

9. LEARN THE PARTICULAR CHARACTERISTICS OF EACH FIREARM.

Not all firearms are alike. Become very familiar with the firearm before shooting. Learn safe handling procedures for loading, unloading, carrying, shooting and storing each firearm before firing the first round.

10. SHOOT SOBER!

NEVER handle any firearm while under the influence of alcohol, drugs, or any medication that may impair your senses in any form.

DISCLAIMER

MDT SHALL NOT BE RESPONSIBLE IN ANY MANNER WHATSOEVER FOR INJURY, DEATH, OR DAMAGE TO PROPERTY AS A RESULT OF THE INTENTIONAL OR ACCIDENTAL MISUSE OF THIS PRODUCT, OR FROM ITS PROPER FUNCTION WHEN THE PRODUCT IS USED FOR PURPOSES FOR WHICH IT WAS NOT DESIGNED.