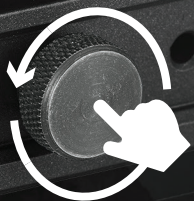


Allen key storage held by magnets can be found under the cheek piece.



Twist to lock and unlock, then push and hold to adjust the cheek piece.

Same applies for the buttpad length of pull.

**SHOOT TOGETHER™**  
**MDTTAC.COM**

Twist to lock and unlock the buttpad height adjustment.

The buttpad can be adjusted left and right 0.6", as well as canted a total of 10°.

To do so, loosen the screws found by either removing the buttpad or moving it all the way up and down, make the adjustment, then re-tighten the screws.

# BUTTSTOCK INSTALLATION

Align the buttstock with the XTN interface on the chassis. Secure the 3/8"-24 buttstock screw using a 5/16" hex key (included).

Torque the buttstock screw to 45 in-lb.



5/16  
IN

45  
IN-LBS

1/8  
IN

The SRS-X Elite includes a 3/4" length of pull spacer that works with the buttpad height adjustment.

To remove it or make adjustments to the buttpad only, loosen the set screws on both sides using a 1/8" hex key as well as the thumbscrew. You can then freely slide the spacer and buttpad off of the buttstock.



SET SCREWS